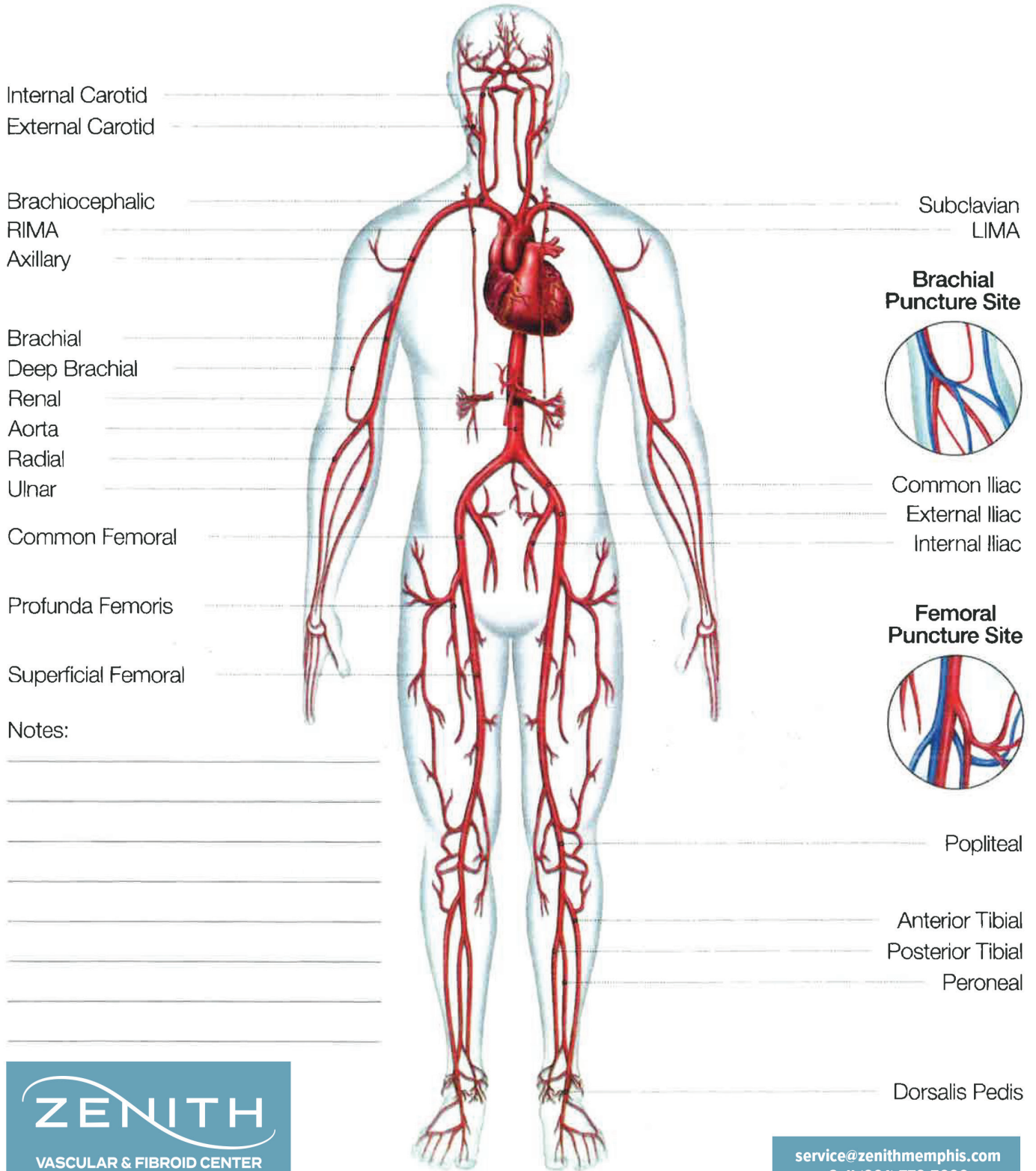


Peripheral Arterial System



Internal Carotid
External Carotid

Brachiocephalic
RIMA
Axillary

Brachial
Deep Brachial
Renal
Aorta
Radial
Ulnar

Common Femoral

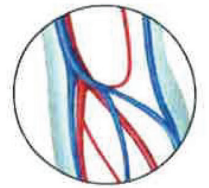
Profunda Femoris

Superficial Femoral

Notes:

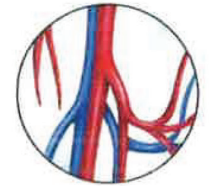
Subclavian
LIMA

**Brachial
Puncture Site**



Common Iliac
External Iliac
Internal Iliac

**Femoral
Puncture Site**



Popliteal

Anterior Tibial
Posterior Tibial
Peroneal

Dorsalis Pedis



Jacqueline Majors, MD | Vascular Surgeon/Director of Limb Salvage Program
Phillip T. Zeni, Jr., MD, FSIR | Interventional & Vascular Physician/Medical Director

service@zenithmemphis.com
Call (901) 779-5000
Direct text: (855) 960-0774
Please fax referrals to (901) 339-9600